



Debra Drexler

CREON @ KI

71 W 23rd St
October 2012 to March 2013

Debra Drexler “commutes” between New York and Hawai‘i, where she Chair’s the Drawing and Painting Program at the University of Hawai‘i. Drexler translates the inner experience into outer form through a vigorous painterly process. Drexler’s large-scale canvases are imbued with light and color recalling the Hawaiian landscape. Drexler’s series “Shadow Play” explores the psychological archetype of the “shadow”, and the ability of the shadow to model and reflect inner light. The shadow of the figure sits at the edge of becoming and dissolution, maintaining the choice of how it enters into a relationship with the beauty and terror of life. Drexler’s paintings make the invisible visible.

Through her recent curatorial projects and exhibitions Debra Drexler has served as a bridge between Hawai‘i and New York. Drexler maintains studios in both New York and Oahu, and her work is informed by her unique bi-coastal experience. Drexler’s Brooklyn studio is in the heart of a burgeoning process-driven painterly movement. *Staring into the Sun* is Drexler’s current solo show at the Arts at Mark’s Garage in Honolulu, Hawai‘i. Other major Hawaiian exhibits include *Gauguin’s Zombie*, which debuted at The Honolulu Museum (formerly Honolulu Academy), and filled the Maui Arts and Cultural Center’s Schaefer International Gallery approximately a decade ago. *Gauguin’s Zombie* toured to New York as well with Drexler’s first NY solo exhibit at White Box (2005). More solo exhibitions in New York followed as Drexler returned to her roots as an abstract painter.

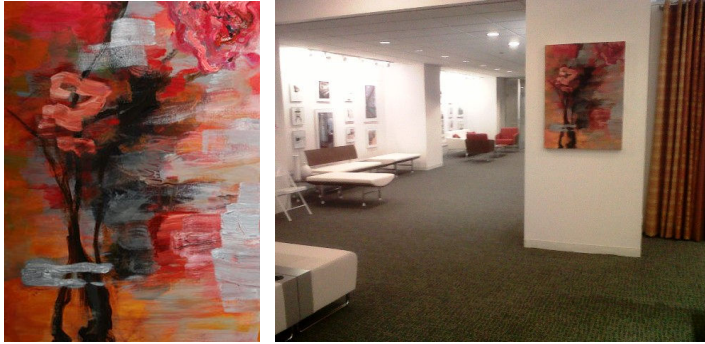
Recent New York solo exhibits include: Pool Art Fair, Chelsea Hotel (2007), Blue Mountain Gallery (2008) and HP Garcia Gallery (2009 and 2010). In addition, Drexler has exhibited in group shows in New York including Denise Bibro Gallery (2008), Exit Art (2010-11), Art Finance Partners in the Fuller Building curate by Robert Edelman (2011), and Stephan Stoyanov Gallery (2012). In addition, Drexler curated exhibitions of University of Hawai‘i graduate students at The Lab Gallery, NY and faculty and alumni in The Pool Art Fair at the Gershwin Hotel, NY. Drexler has been in hundreds of exhibitions locally, nationally and internationally.

Contact: debra.drexlerfineart@gmail.com debradrexler.wordpress.com

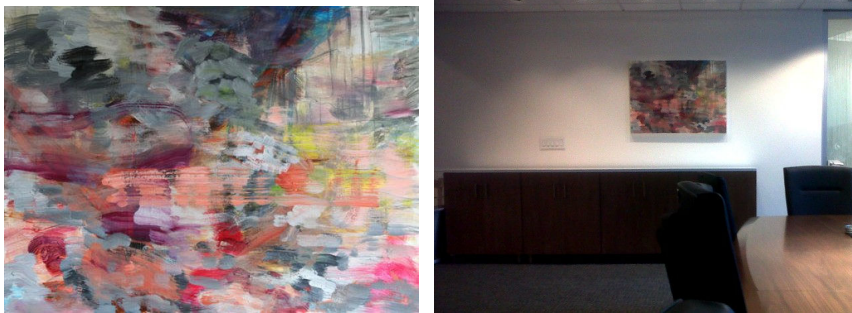
Debra Drexler

CREON @ KI

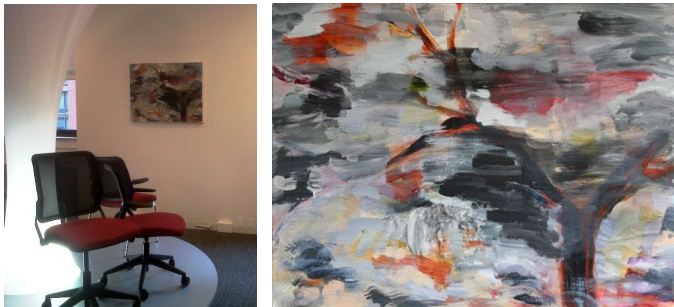
71 W 23rd St
October 2012 to March 2013



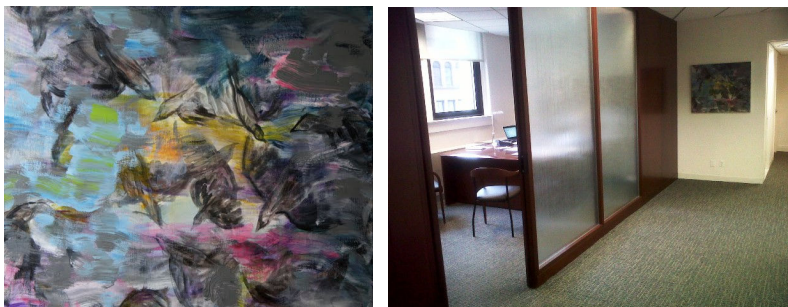
Poesis Shadow
40 x 30 in, oil on canvas
\$2,950.



Pink Stripe
30 x 40 in, oil on canvas
\$2,950.



Tree Floating Head
30 x 40 in, oil on canvas
\$2,950.



Storm
30 x 36 in, oil on linen
\$2,950.